

Socket® with Bluetooth® Wireless Technology Connection Kit for Windows Mobile



CompactFlash Card for Pocket PC 2003/2003SE/5.0



Add *Bluetooth*® wireless technology to your Pocket PC with a simple plug-in card that goes in the CompactFlash (CF) slot. You'll be able to quickly and easily connect to a variety of electronic devices without any cables or wires in the way. Enjoy the convenience and comfort of wireless connectivity from your favorite Window Mobile-based device.

With the Connection Kit for Windows Mobile, you can connect to a *Bluetooth* enabled bar code scanner, GPS receiver or other serial device completely wire-free. Connect to another *Bluetooth* enabled PDA or computer to exchange business cards, browse and share files, or synchronize data with ActiveSync.

Enjoy the convenience of wireless email, Internet, and LAN access by connecting to a *Bluetooth* cell phone, modem or LAN access point. You can even send files wirelessly to a printer, perfect for mobile printing applications.

A Perfect Fit — No Protruding Parts

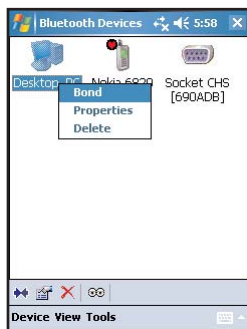
The Socket Cordless Card is the only Type I CompactFlash card with an integrated antenna, which enables the card to fit completely inside the CF slot. No protruding parts means less chance of damage to both the PDA and card, especially when packed for travel. It's ideal for industrial devices with covers sealing the CF slot.

Easy-to-Use Software

The kit includes a complete suite of software for Windows Mobile that makes it effortless to create, configure, and manage your *Bluetooth* connections.



Handy wizards help you connect



Tap icons to quickly perform connection tasks



Specialized tools for object exchange and other applications



FEATURES

- *Bluetooth* 1.1 certified
- Class 2 *Bluetooth* radio has range of 30 feet (10 meters)*
- CompactFlash (CF) Type I card with integrated antenna fits entirely inside a CF card slot
- RoHS and WEEE compliant
- Connect to a wide variety of *Bluetooth* enabled devices: bar code scanners; GPS receivers; desktop, laptop and tablet PCs; LAN access points; mobile phones; modems; printers; PDAs; faxes and more
- Works with Socket Cordless products: Cordless Ring Scanner, Cordless Hand Scanner, Cordless Serial Adapter, Cordless 56K Modem, and GPS Receiver
- Compatible with *Bluetooth* phones from Motorola, Nokia, NTT Docomo, Siemens, Sony Ericsson, and more
- With upgrade kit, card works in PC Card slot of notebook/tablet computers running Windows 2000 and XP
- Works with Juniper Systems Archer and TDS Recon X-Series
- Warranty: 3 years

SOFTWARE

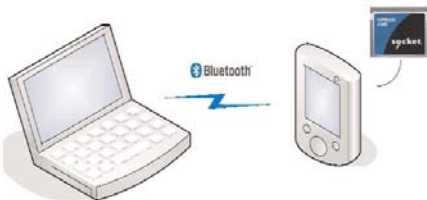
- *Bluetooth* Setup Wizard helps you prepare your device name and COM ports
- *Bluetooth* Devices manager makes it easy to manage *Bluetooth* connections with intuitive graphics and handy wizards
- Special wizards for object exchange, LAN access, ActiveSync, dial-up networking
- Socket Dialer software automatically makes your phone start dialing any number you tap in your Pocket PC contact list (Pocket PC 2003/2003SE only)
- Includes PrintPocketCE software from Field Software for wireless printing (30-day trial version)

* Range depends upon environment, number of users, and other wireless devices in immediate proximity.

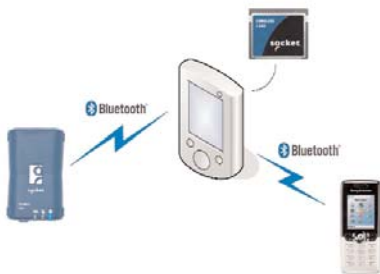
Socket®

CF Connection Kit for Windows Mobile

with Bluetooth® Wireless Technology



Connect to a laptop, desktop or tablet computer to share files or synchronize data.



Connect to a GPS receiver and cell phone for real-time GPS navigation using online map data.

SPECIFICATIONS

Physical Characteristics:

Antenna: Integrated

Card Dimensions: 36 x 43 x 3.3 mm

Weight: 0.3 oz (9 g)

Power Consumption:

3.3 V Supply:

Idle: 16 mA (52.8 mW)

Typical: 40 mA (132 mW)

Maximum: 90 mA (297 mW)

5 V Supply:

Idle: 20 mA (79.8 mW)

Typical: 44 mA (159 mW)

Maximum: 94 mA (324 mW)

Supply Voltage, VCC: +5.0/3.3V \pm 5%

Interface: CompactFlash I/O

Operating Temp.: -10 to +60°C

Storage Temp.: -30 to +85°C

Warranty: Three years

Device Support:

Windows Mobile 2003, 2003 SE, 5.0*

Bluetooth Characteristics:

Specification: Bluetooth 1.1

Chipset: CSR BC02-EXT

Protocol: Bluetooth 2.45 GHz ISM band frequency hopping

Radio range: Up to 30 ft (10 m)**

Connection: Point-to-point and Point-to-multipoint

Security: Encrypted link

RF Power Output: 0.001 Watt

Bluetooth Profile Support:

- General Access
- Service Discovery
- Dial-up Networking (DUN)
- Fax
- File Transfer (FTP)
- General Object Exchange (OBEX)
- LAN (via PPP)
- Serial Port (SPP)
- Object Push

Certification/Compliance:

Bluetooth SIG 1.1

CompactFlash Spec. 2.0

FCC: Part 15, Class B

CE Mark: ETS 300 328, ETS 300 826

C-TICK: s.182

TELEC

Included Software:

Bluetooth Setup Wizard

Get Connected! Wizard

Bluetooth Device Manager

Bluetooth ActiveSync

BluetoothLAN Access

Socket OBEX

Socket Dialer (Pocket PC 2003/2003SE only)

Third Party Software (trial versions)

Supported Bluetooth Devices:

Please view a list online at:

www.socketcom.com/product/bluetooth.asp

*Devices running Windows Mobile 5.0 require ActiveSync 4.0 or greater, which does not support synchronization over Ethernet

**Range depends on environment, number of users, and other wireless devices in immediate proximity

FOR ADDITIONAL PRODUCT INFORMATION

Sales Offices:

Corporate Headquarters:

Phone: 510-744-2700

Domestic Toll Free: 800-552-3300

Fax: 510-744-2727

Website: www.socketcom.com

Online Contact: www.socketcom.com/contact

Ordering Information:

SKU#: BL4538-641 (Single)

BL4540-643 (20-Pack)



© 2006, Socket Communications, Inc. Socket Communications, Socket, the Socket logo, and Battery Friendly are registered trademarks or trademarks of Socket Communications, Inc. The Bluetooth word mark and logo are owned by the Bluetooth SIG, Inc. and any use of such marks by Socket Communications, Inc. Microsoft and Windows are either registered trademarks or trademarks of Microsoft Corporation in the United States and/or other countries. All other brand and product names are trademarks of their respective holders.

6450-00059 T 8/2006