

SHR-5000 Series



Summary

The SHR-5000 Series DVR is a standalone system that can record up to 120/100 images per second from 4, 8 and 16 channels using MPEG4 compression. It is able to simultaneously record-to and play-from a hard drive in real time by compressing the audio of 4 channels with ADPCM (Adaptive Differential Pulse Code Modulation). Using dual codecs, the SHR-5000 Series DVR can smoothly record and transmit through a network, allowing continuous remote monitoring even in a poor network environment.

Features

- Video recording up to 120/100ips and 4 channel audio recording
- Recording and network transmission via each codec by adopting dual codec.
- Exclusive video processor : image quality improved by more than 30% compared to existing products.
- Various backup through USB 2.0 : USB memory, external HDD, external CD-RW (SHR-5042), DVD-RW (SHR-5082/5162).
- Various video outputs supported.
- Simultaneous VGA and composite output.
- Watermark for preventing video alteration.
- Remote monitoring and control through network : Ethernet, cable network, xDSL.
- Convenient IR remote controller and mouse (Mouse is only available for SHR-504x).
- Smooth backup by using built-in DVD-RW (SHR-5082/5162).
- Convenient user interface : Event, Date/Time, Go to First/Last, Backup Search and Calendar functions

Dimensions (unit:mm)



Front / Rear Panel



SHR-5040/5042



SHR-5080/5082

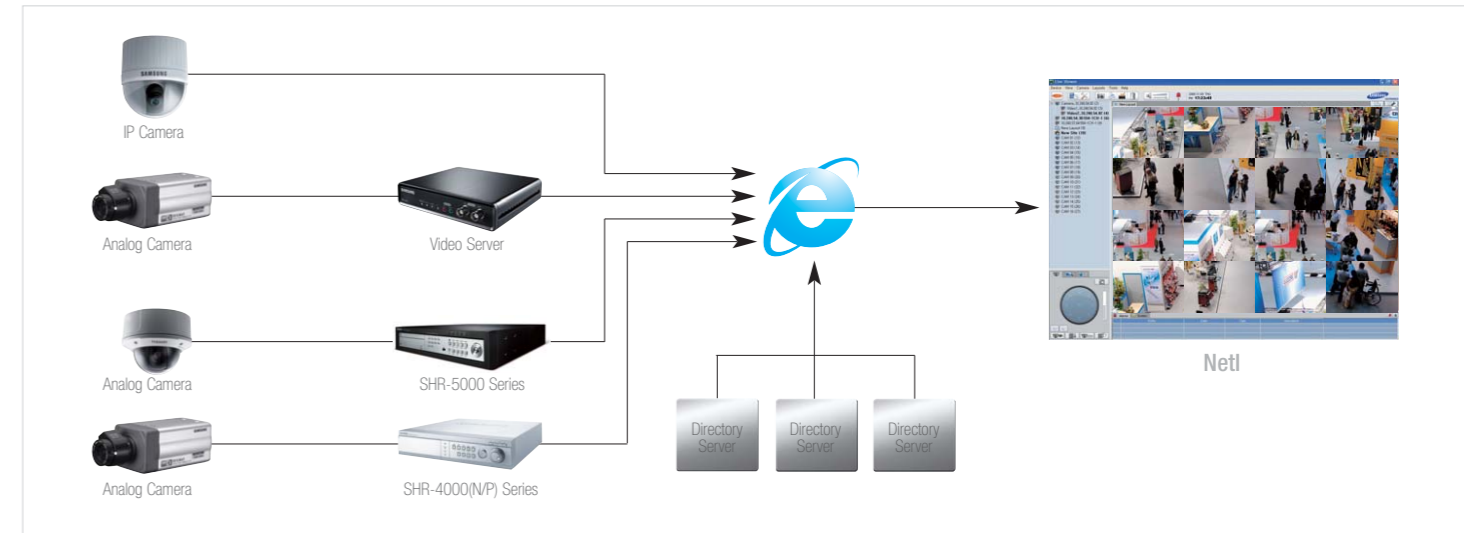


SHR-5160/5162

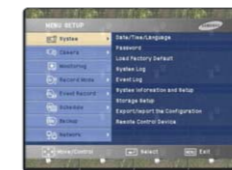
* SHR-5082/5162 is installed with a DVD-RW unit.

Network-Integrated Viewer (NetI)

The SHR-5000 Series CVR can be monitored with NetI, Samsung's integrated monitoring solution, allowing easy set up of a video management network.



UI for Convenience



MENU SETUP SCREEN

- Monitoring and recording up to 480/400ips and 120/100ips respectively
- Live display of up to 480/400ips and recording of up to 120/100ips



SEARCH SCREEN

- Search by Calendar and Event
- Search by Time and Date or by Event



Remote Monitoring Screen

- Remote DVR management function
- Callback function
- Allowing simultaneous connection up to 3 users

Recording Speed/Recording Speed in Varying Resolutions (250GB standard)

• SHR-5040/5042

Video Compression Ratio Recording Speed by Resolution	D1				Half D1				CIF			
	Very High	High	Standard	Low	Very High	High	Standard	Low	Very High	High	Standard	Low
30.0 ips	-	-	-	-	-	-	-	-	155Hr	231Hr	449Hr	862Hr
15.0 ips	-	-	-	-	184Hr	277Hr	517Hr	936Hr	311Hr	463Hr	898Hr	1725Hr
8.0 ips	-	-	-	-	344Hr	519Hr	970Hr	1755Hr	583Hr	868Hr	1683Hr	234Hr
4.0 ips	321Hr	484Hr	906Hr	1.638Hr	689Hr	1037Hr	1940Hr	3509Hr	1166Hr	1736Hr	3366Hr	6468Hr
2.0 ips	643Hr	968Hr	1811Hr	3275Hr	1377Hr	2075Hr	3881Hr	7018Hr	2331Hr	3472Hr	6732Hr	12936Hr
1.0 ips	1285Hr	1936Hr	3622Hr	6550Hr	2755Hr	4149Hr	7761Hr	14037Hr	4662Hr	6944Hr	13464Hr	25871Hr

* The recording time for each recording speed can vary slightly, according to the type of video input signal.

* The above table shows the time taken when recording 1 channel. This product allows selection of the recording time and resolution by channel.

• SHR-5080/5082/5160/5162

Video Compression Ratio Recording Speed by Resolution	Half D1								CIF							
	Level 8	Level 7	Level 6	Level 5	Level 4	Level 3	Level 2	Level 1	Level 8	Level 7	Level 6	Level 5	Level 4	Level 3	Level 2	Level 1
30.0 ips	238 Hr	267 Hr	304 Hr	347 Hr	413 Hr	510 Hr	667 Hr	911 Hr	403 Hr	456 Hr	510 Hr	598 Hr	693 Hr	866 Hr	1,081 Hr	1,569 Hr
15.0 ips	377 Hr	423 Hr	475 Hr	551 Hr	654 Hr	806 Hr	1,018 Hr	1,439 Hr	630 Hr	707 Hr	806 Hr	936 Hr	1,081 Hr	1,329 Hr	1,724 Hr	2,292 Hr
7.5 ips	619 Hr	693 Hr	779 Hr	899 Hr	1,065 Hr	1,280 Hr	1,643 Hr	2,292 Hr	1,033 Hr	1,153 Hr	1,304 Hr	1,501 Hr	1,724 Hr	2,086 Hr	2,640 Hr	3,594 Hr
3.7 ips	911 Hr	1,018 Hr	1,143 Hr	1,317 Hr	1,534 Hr	1,863 Hr	2,331 Hr	3,183 Hr	1,501 Hr	1,663 Hr	1,863 Hr	2,118 Hr	2,498 Hr	2,979 Hr	3,690 Hr	4,845 Hr
1.8 ips	1,410 Hr	1,560 Hr	1,757 Hr	1,996 Hr	2,331 Hr	2,771 Hr	3,460 Hr	4,530 Hr	2,274 Hr	2,498 Hr	2,799 Hr	3,147 Hr	3,641 Hr	4,253 Hr	5,208 Hr	6,557 Hr
0.9 ips	1,724 Hr	1,907 Hr	2,134 Hr	2,422 Hr	2,813 Hr	3,336 Hr	4,097 Hr	5,307 Hr	2,744 Hr	3,011 Hr	3,356 Hr	3,764 Hr	4,286 Hr	4,975 Hr	5,992 Hr	7,431 Hr

* The recording time for each recording speed can vary slightly, according to the type of video input signal.

* The above table shows the time taken when recording 1 channel. This product allows selection of the recording time and resolution by channel.

SHR-5040/5042

4Ch Standalone DVR



SHR-5080/5082

8Ch Standalone DVR



Specifications

Model			SHR-5040	SHR-5042
Video	Input	Composite	4 Channels, 1Vp-p, 75 Ohm	
	Output	Composite	2 channels (Normal 1 Channel, Spot 1 Channel)	
		S-Video	1 Channel	
		VGA	1 Channel	
		Loop Through	4 Channels	
Audio	Input / Output	Mono 4 Channels, RCA / 1 Channel, RCA		
Recording	Compression Method	Video/Audio	MPEG4/ADPCM	
	Video	Very High	45.1(D1), 24.0(Half D1), 14.2(CIF)	
		High	29.5(D1), 15.9(Half D1), 9.5(CIF)	
	Compression Rate	Standard	17.4(D1), 8.5(Half D1), 4.9(CIF)	
		Low	9.1(D1), 4.7(Half D1), 2.6(CIF)	
	(Kbyte/Image)	Low	9.1(D1), 4.7(Half D1), 2.6(CIF)	
	Resolution		CIF, Half D1, Full D1	
	Max. Recording Speed (NTSC/PAL)		CIF:120/100ips, Half D1:60/50ips, Full D1:30/25ips	
Recording Mode		Events (Alarm, Motion Detection, Video Loss)		
Live Screen	Resolution		D1	
	Display Speed (NTSC/PAL)		120ips/100ips	
	Display Mode		Single, 4, PIP, Sequence, Freeze, 2X Zoom	
Network Transmission	Compression Method	Video/Audio	MPEG4 / ADPCM	
	Video	Very High	N/A (Flexible according to recording condition)	
		High		
		Standard		
		Low		
Resolution		CIF, Half D1, Full D1		
Search and Play	Search Mode		Date/Time Search, Search by Camera, Event Search (Alarm, Motion Detection, Video Loss), First/ Latest/ Backup Search	
	Display Mode		Single, 4, 9 (4 Play Screens, 4 Live Screens)	
	Play Mode		Play, Pause, Stop	
Event	Alarm Function/Alarm Input/Alarm Output		Remote Callback / 4 Channels / 2 Channels	
	Alarm Output Continuation Time		Alarm continues until it is turned off	
	Motion Detection		Area Setup (5 steps)	
	Pre Event Set Time		3, 4, 5 sec	
Post Event Set Time		5,10,20,30 sec, 1, 3, 5, 10, 20 Min		
Water Mark			Yes	
HDD	Default		160G	250G
	Expansion Capability(Total)		250G x 2	250G
CD-RW / DVD-RW			-	CD-RW
Backup	Interface		USB 2.0 2 Ports (1 at the front , 1 at the rear)	
	Media		CD-RW, External HDD, USB Memory	
	File Format		SFX, AVI	
External Port	RS-485		PTZ Control	
USB Mouse / Remote Controller / Network			Yes / Yes / Static IP, DHCP, ADSL (PPPoE)	
Operating Temp. / Operating Humidity			0°C ~ 40°C / 25% ~ 80% RH	
Power Requirement / Power Consumption			AC 100~240V, 50/60Hz / 28W	
Weight / Outline Dimension			4.0Kg / 215(W) x 88(H) x 352(D)mm	

Specifications

Model			SHR-5080	SHR-5082
Video	Input	Composite	8 Channels, 1Vp-p, 75 Ohm	
	Output	Composite	3 Channels (Normal 1 Channel, Spot 2 Channels)	
		S-Video	1 Channel	
		VGA	1 Channel	
		Loop Through	8 Channels	
Audio	Input / Output	Mono 4 Channels, RCA / 1 Channel, RCA		
Recording	Compression Method	Video/Audio	MPEG4/ADPCM	
	Video	Level 8	NTSC : 8.8(Half D1), 5.1(CIF) / PAL : 10.5(Half D1), 6.1(CIF)	
		Level 7	NTSC : 7.8(Half D1), 4.5(CIF) / PAL : 9.4(Half D1), 5.5(CIF)	
		Level 6	NTSC : 6.8(Half D1), 4.0(CIF) / PAL : 8.3(Half D1), 4.8(CIF)	
		Level 5	NTSC : 6.0(Half D1), 3.4(CIF) / PAL : 7.1(Half D1), 4.2(CIF)	
			NTSC : 5.0(Half D1), 2.9(CIF) / PAL : 6.0(Half D1), 3.4(CIF)	
		Level 4	NTSC : 5.0(Half D1), 2.9(CIF) / PAL : 6.0(Half D1), 3.4(CIF)	
		Level 3	NTSC : 4.0(Half D1), 2.3(CIF) / PAL : 4.9(Half D1), 2.8(CIF)	
		Level 2	NTSC : 3.1(Half D1), 1.8(CIF) / PAL : 3.7(Half D1), 2.0(CIF)	
	Level 1	NTSC : 2.2(Half D1), 1.2(CIF) / PAL : 2.6(Half D1), 1.5(CIF)		
	Resolution		CIF, Half D1	
Max. Recording Speed (NTSC/PAL)		CIF:120/100ips, Half D1:60/50ips		
Recording Mode		Events (Alarm, Motion Detection, Video Loss)		
Live Screen	Resolution		D1	
	Display Speed (NTSC/PAL)		240ips/200ips	
	Display Mode		Single, 4, 6, 7, 8, 9, 16, PIP, Sequence, Freeze, 2X Zoom	
Network Transmission	Compression Method	Video/Audio	MPEG4 / ADPCM	
	Video	Very High	NTSC : 9.8K(Half D1), 4.9K(CIF) / PAL : 11.7K(Half D1), 5.9K(CIF)	
		High	NTSC : 7.3K(Half D1), 3.7K(CIF) / PAL : 8.8K(Half D1), 4.4K(CIF)	
		Standard	NTSC : 4.9K(Half D1), 2.4K(CIF) / PAL : 5.9K(Half D1), 2.9K(CIF)	
		Low	NTSC : 2.4K(Half D1), 1.2K(CIF) / PAL : 2.9K(Half D1), 1.5K(CIF)	
Resolution		CIF, Half D1		
Search and Play	Search Mode		Calendar Search, Event Search (Alarm, Motion Detection, Video Loss), First/ Latest/ Backup Search	
	Display Mode		Single, 4, 9, 16, PIP (1 Channel for Play, 1 Channel for Live), Triplex 9 (1 Channel for Play, 8 Channels for Live), Triplex 16 (1 Channel for Play, 15 Channels for Live)	
	Play Mode		Play, Pause, Stop, 2X Digital Zoom, Fast Forward/Fast Reverse(2X, 4X, 8X, 16X, 32X, 64X)	
Event	Alarm Function/Alarm Input/Alarm Output		Remote Callback / 8 Channels / 4Channels	
	Alarm Output Continuation Time		Off, 3, 5, 10, 20, 30	
	Motion Detection		Area Setup	
	Pre Event Set Time		Off, 5,10,20,30 sec	
Post Event Set Time		Off, 5,10,20,30 sec, 1, 3, 5, 10, 20 Min		
Water Mark			Yes	
HDD	Default		250G	
	Expansion Capability(Total)		250G x 4	250G x 3
CD-RW / DVD-RW			-	DVD-RW
Backup	Interface		USB 2.0 2 Ports (1 at the front , 1 at the rear)	
	Media		CD-RW, External HDD, USB Memory	
	File Format		AVI	
External Port	RS-485		PTZ Control, System Keyboard	
USB Mouse / Remote Controller / Network			- / Yes / Static IP, DHCP, ADSL (PPPoE)	
Operating Temp. / Operating Humidity			0°C ~ 40°C / 20% ~ 80% RH	
Power Requirement / Power Consumption			AC 100~230V, 50/60Hz / 60W	
Weight / Outline Dimension			7.3Kg / 430(W) x 88(H) x 400(D)mm	



Specifications

Model		SHR-5160	SHR-5162	
Video	Input	Composite 16 Channels, 1Vp-p, 75 Ohm		
	Output	Composite	3 Channels (Normal 1 Channel, Spot 2 Channels)	
		S-Video	1 Channel	
		VGA	1 Channel	
	Loop Through	16 Channels		
Audio	Input / Output	Mono 4 Channels, RCA / 1 Channel, RCA		
Recording	Compression Method	Video/Audio	MPEG4/ADPCM	
	Video Compression Rate (Kbyte/Image)	Level 8	NTSC : 8.8(Half D1), 5.1(CIF) / PAL : 10.5(Half D1), 6.1(CIF)	
		Level 7	NTSC : 7.8(Half D1), 4.5(CIF) / PAL : 9.4(Half D1), 5.5(CIF)	
		Level 6	NTSC : 6.8(Half D1), 4.0(CIF) / PAL : 8.3(Half D1), 4.8(CIF)	
		Level 5	NTSC : 6.0(Half D1), 3.4(CIF) / PAL : 7.1(Half D1), 4.2(CIF)	
		Level 4	NTSC : 5.0(Half D1), 2.9(CIF) / PAL : 6.0(Half D1), 3.4(CIF)	
		Level 3	NTSC : 4.0(Half D1), 2.3(CIF) / PAL : 4.9(Half D1), 2.8(CIF)	
	Level 2	NTSC : 3.1(Half D1), 1.8(CIF) / PAL : 3.7(Half D1), 2.0(CIF)		
	Level 1	NTSC : 2.2(Half D1), 1.2(CIF) / PAL : 2.6(Half D1), 1.5(CIF)		
	Resolution	CIF, Half D1		
Max. Recording Speed (NTSC/PAL)	CIF:120/100ips, Half D1:60/50ips			
Recording Mode	Events (Alarm, Motion Detection, Video Loss)			
Live Screen	Resolution	D1		
	Display Speed (NTSC/PAL)	480ips/400ips		
	Display Mode	Single, 4, 6, 7, 9, PIP, Sequence, Freeze, 2X Zoom		
Network Transmission	Compression Method	Video/Audio	MPEG4 / ADPCM	
	Video Compression Rate (Kbyte/Image)	Very High	NTSC : 9.8K(Half D1), 4.9K(CIF) / PAL : 11.7K(Half D1), 5.9K(CIF)	
		High	NTSC : 7.3K(Half D1), 3.7K(CIF) / PAL : 8.8K(Half D1), 4.4K(CIF)	
		Standard	NTSC : 4.9K(Half D1), 2.4K(CIF) / PAL : 5.9K(Half D1), 2.9K(CIF)	
Low	NTSC : 2.4K(Half D1), 1.2K(CIF) / PAL : 2.9K(Half D1), 1.5K(CIF)			
Resolution	CIF, Half D1			
Search and Play	Search Mode	Calendar Search, Event Search (Alarm, Motion Detection, Video Loss), First/ Latest/ Backup Search		
	Display Mode	Single, 4, 9, 16, PIP (1 Channel for Play, 1 Channel for Live), Triplex 9 (1 Channel for Play, 8 Channels for Live), Triplex 16 (1 Channel for Play, 15 Channels for Live)		
	Play Mode	Play, Pause, Stop, 2X Digital Zoom, Fast Forward/Fast Reverse(2X, 4X, 8X, 16X, 32X, 64X)		
Event	Alarm Function/Alarm Input/Alarm Output	Remote Callback / 16 Channels / 4Channels		
	Alarm Output Continuation Time	Off, 3, 5, 10, 20, 30		
	Motion Detection	Area Setup		
	Pre Event Set Time	Off, 5, 10, 20, 30 sec		
Post Event Set Time	Off, 5, 10, 20, 30 sec, 1, 3, 5, 10, 20 Min			
Water Mark	Yes			
HDD	Default	250G		
	Expansion Capability(Total)	250G x 4	250G x 3	
CD-RW / DVD-RW	-		DVD-RW	
Backup	Interface	USB 2.0 2 Ports (1 at the front , 1 at the rear)		
	Media	CD-RW, External HDD, USB Memory	DVD-RW, External HDD, USB Memory	
	File Format	AVI		
External Port	RS-485	PTZ Control, System Keyboard		
USB Mouse / Remote Controller / Network	- / Yes / Static IP, DHCP, ADSL (PPPoE)			
Operating Temp. / Operating Humidity	0°C ~ 40°C / 20% ~ 80% RH			
Power Requirement / Power Consumption	AC 100~230V, 50/60Hz / 60W			
Weight / Outline Dimension	7.3Kg / 430(W) x 88(H) x 400(D)mm			