

Mobile Powered Workstations & Accessories

Product Overview

About Us

Newcastle Systems' commitment is to provide innovative solutions that help to make equipment more mobile and information more readily available across an entire enterprise.

Our full line of powered wireless workstations can be integrated with computers, printers, barcode scanners, test and most other small equipment. Together they can improve efficiencies in a wide variety of applications including **inventory control, process control, information recording, label printing, product testing, order picking** and much more.

Our workstations will help you eliminate unnecessary foot travel and significantly improve accuracy by having your mobile wireless workstation right at your fingertips. **Anytime. Anywhere.**



Unique Features

Mobile

With a small footprint, all units can be easily maneuvered anywhere in your facility.

Powered

Our integrated power packages enable you to power a variety of equipment that includes computers, industrial printers, barcode scanners and more.

Adjustable & Ergonomically Designed

The unique slotted upright mast gives the operator the ability to adjust the height of the shelf or accessory to the most comfortable position.

Modular

A number of optional accessories such as a keyboard tray or post-mount LCD are available and can be easily integrated in seconds for a highly versatile workstation.

Markets Served

Integrated with your powered equipment, our full line of mobile powered workstations, accessories and power packages can increase productivity for a wide variety of industries.

Retail

Our workstations are ideal for point-of-sale, product & shelf labeling, printing on demand, mark downs & price changes, as well as line busting.

Healthcare

Improve patient care by ensuring the medical professional has the most up to date patient information. The deployment of a computer or thin client facilitates electronic charting with our wireless mobile computer cart.

Manufacturing

Mobile workstations support lean manufacturing principles that require greater operational flexibility. Our wireless workstations can be deployed throughout a facility including production, QA and shipping.

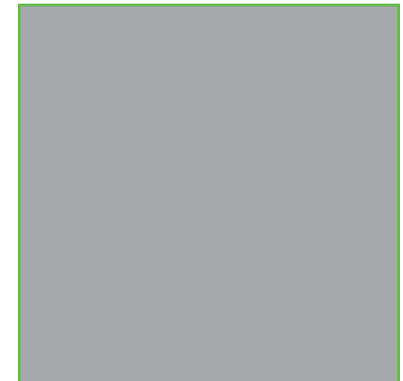
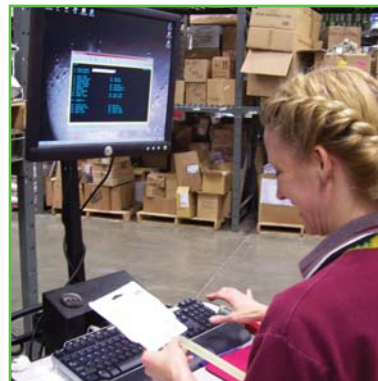
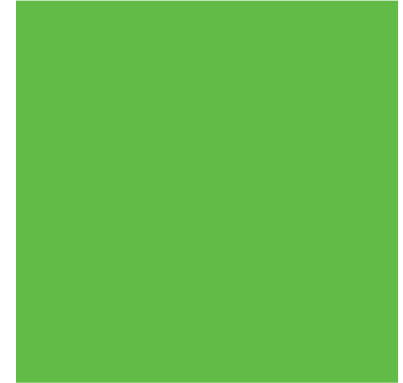
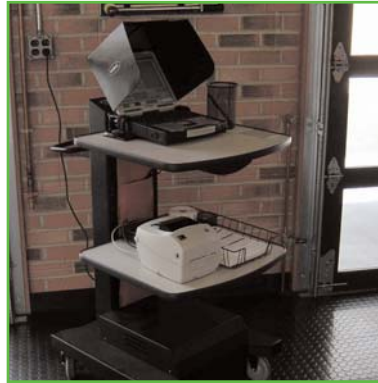
Warehousing/Distribution

Maximizing supply and demand chain efficiencies are on-going goals of progressive organizations. Mobile workstations deployed in a facility can help support ERP and WMS systems to achieve higher productivity.

Applications

Typical applications where our mobile powered workstations can improve efficiencies:

- Inventory Management
- Mobile On-Demand Label Printing
- Shipping & Receiving
- Cross-Docking
- Order Picking
- Electronic Work Instruction & More



NB Series Workstations

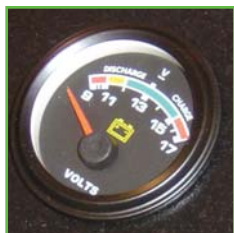
The **Patented NB Series Mobile Powered Workstation** was developed to provide true mobility within a facility. With a compact 24" (610 mm) wide x 26" (660 mm) deep footprint, this ergonomically designed unit can be positioned into the most remote corners.

The NB Series offers maximum flexibility. Each shelf is secured to a slotted upright system and can be repositioned in seconds to suit the operator's needs.

The smallest power package starts with a 40 AH battery, a 350 watt inverter, and a 10 amp charger. The largest goes up to a 200 AH battery, a 1,250 watt inverter and a 30 amp charger. It can power up to 4 devices at once for about 8-12 hours of normal use. (A non-powered version is also available.)

A number of optional accessories are available and can be easily integrated in seconds for a highly versatile workstation. (See accessories on page 8).

Features



Battery volt meter



Integrated powerstrip



Slotted support mast



NB Series Workstation shown above with optional second shelf, post-mounted flat screen holder and keyboard tray.

Technical Specifications

US Patent No. D553,324

Height Adjustable:	Shelf adjustable from 20"-40" (508 x 1016 mm)
Shelf:	(1 std.) 24" wide x 22" deep laminated (610 x 559 mm)
Capacity:	75 lbs (34 kg) per shelf evenly distributed
Casters:	5" (127 mm) casters, front fixed, rear locking swivel
Battery:	40, 100, or 200 AH sealed lead acid (SLA)
Battery Status:	Panel indicates the current charge in battery
Charger:	10, 20, or 30 amp, 3 step smart charger
Inverter:	350W out, 500W peak, modified sine wave 750W out, 1,250W peak, modified sine wave 1,250W out, 2,000W peak, modified sine wave
Colors:	Black powder coat
Dimensions:	24" wide x 26" long x 43" high (610 x 660 x 1092 mm)
Weight:	Powered: 155+ lbs (70 kg), Non-powered: 85 lbs (39 kg)



Non-powered version



Test station with optional second shelf

PC Series Powered Picking Workstations

The **PC Series Powered Picking Workstation** offers many of the same standard features as the NB Series. It has been designed to hold and power a variety of additional equipment, yet also provides generous space to hold inventory.

The PC Series consists of 30" (762 mm) and 60" (1,524 mm) deep workstations that are designed for ease of mobility. With high performance 6" (152 mm) rubber casters and narrow profile they can be moved and positioned with minimal effort ensuring operator usage throughout a facility.

The top shelf is ergonomically adjustable and can be set at 3 different heights to suit the operator and the task being performed. The optional middle shelf is also adjustable in height. The bottom shelf holds the power package and is accessible as needed. It can also be used for additional storage space.

A number of optional accessories are available and can be easily integrated in seconds for a highly versatile workstation. (See accessories on page 8).



30" (762 mm) deep unit

PC Series Workstation with optional middle shelf

Technical Specifications

Models:	30" (762 mm) deep unit and 60" (1,524 mm) deep unit
Shelf:	(1 std.) 24" (610 mm) wide x 30" (762mm) or 60" (1,524 mm) deep with optional 1.5" (38 mm) lip on 3 sides
Capacity:	500 lbs (227 kg) total: 200 lbs (91 kg) on top, 100 lbs (45 kg) on middle shelf, and 200 lbs (91 kg) on bottom
Casters:	6" x 2" (152 x 51 mm) rubber wheels, front fixed, rear locking swivel
Battery:	100, 200, or 300 AH sealed lead acid (SLA)
Battery Status:	Panel indicates the current charge in battery
Charger:	10, 20, or 30 amp, 3 step smart charger, 115V 60hz
Inverter:	350W continuous, 500W peak, 115V 60hz, MSW 750W continuous, 1,250W peak, 115V 60hz, MSW 1,250W continuous, 2,000W peak, 115V 60hz, MSW
Colors:	Black powder coat
Dimensions:	26" wide x 35.5" long x 43 - 37" high (660 x 902 x 1,092 - 940 mm) 26" wide x 66.5" long x 43 - 37" high (660 x 1,689 x 1,092 - 940 mm)
Weight:	225+ lbs (102 kg) / 310+ lbs (141 kg)



Mobile print station

RC Series Utility Workstations

Newcastle Systems has designed a **compact RC Series workstation**. With its sleek support members it can be used in a wide variety of applications including retail, warehousing and manufacturing. Its small footprint makes it perfect for narrow aisles and small spaces. Designed with 5" (127 mm) swivel casters, it ensures easy maneuverability in any environment.

The RC Series rugged powered or non-powered carts are constructed with 11 gauge steel and fully reinforced surfaces. It has been designed to handle rough treatment over time.

Each cart includes an 18" (457 mm) storage compartment for storing miscellaneous items such as documents, notebooks, other stationery items and tools.

A number of optional accessories are available and can be easily integrated in seconds for a highly versatile workstation. (See accessories on page 8).



Powered version



Full storage on lower shelf w/non powered version

Technical Specifications

Surface:	20 x 22" (508 x 559 mm) deep laminated worksurface with 1/4" lip on all sides; Optional middle shelf 20 x 20" (508 - 508 mm)
Capacity:	50 lbs (23 kg) each for top and bottom shelves
Casters:	5" (127 mm) rubber wheels, front fixed, rear locking swivel
Battery:	40 or 100 AH sealed lead acid (SLA)
Battery Status:	Panel indicates the current charge in battery
Charger:	10, or 20 amp, 3 step smart charger
Inverter:	350W out, 500W peak, modified sine wave 750W out, 1,250W peak, modified sine wave
Colors:	Black powder coat
Dimensions:	18.5" wide x 22" long x 39" high (470 x 559 x 991 mm)
Weight:	Powered: 115+(52 kg), Non-Powered: 70 lbs (32 kg)



Standard storage compartment

PP Series Portable Power Packages

PP8

350 watt inverter w/10 amp charger, 40 amp hour battery w/status meter

Battery Life: 8 hrs for laptop

Weight: 65 lbs. (L x W x H): 16" x 16" x 12"

PP12

350 watt inverter w/10 amp charger, 100 amp hour battery w/status meter

Battery Life: 7 hrs for laptop and thermal printer

Weight: 100 lbs. (L x W x H): 16" x 16" x 12"

PP22

750 watt inverter w/20 amp charger, 100 amp hour battery w/status meter

Battery Life: 5 hrs for desktop computer

Weight: 100 lbs. (L x W x H): 16" x 16" x 12"

PP25

750 watt inverter w/20 amp charger, (2) 100 amp hour batteries w/status meter. (Please note: inverter must be placed outside of the battery box. Optional inverter holder available.)

Battery Life: 7 hrs for desktop computer and thermal printer

Weight: 170 lbs. (L x W x H): 16" x 16" x 12"

PP27 (International)

220V 50Hz, 750 watt, (2) 100 amp hour batteries w/status meter. (Please note: inverter must be placed outside of the battery box. Optional inverter holder available.)

Battery Life: 7 hrs for desktop computer and thermal printer

Weight: 170 lbs. (L x W x H): 16" x 16" x 12"

Looking for portable power? Newcastle Systems' PP Series Portable Power Packages provide consistent, reliable run time for virtually any application requiring portable power. This includes (but not limited to) outdoor mobile concessions, remote display areas, non-powered equipment carts, trailers and much more.

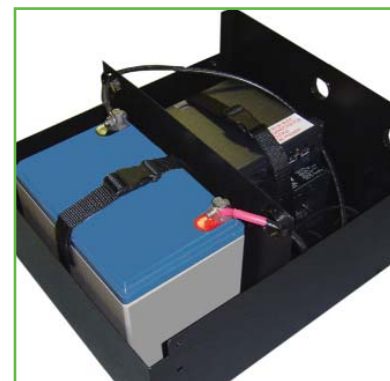
Our full line of economical power packages consist of an inverter, smart charger, battery, battery status meter, wire harness and a sealed but fully ventilated cabinet. An optional inverter/charger status meter is also available.

Battery Usage Chart

Wattage	40AH Hours	100AH Hours	150AH Hours	200AH Hours	300AH Hours
50	9	20	30	40	60
100	4	10	15	20	30
150	3	7	10	13	20
200	2	5	7	10	15
300		3	5	7	10
500		2	3	4	6
700			2	3	4

Based on 50% active equipment usage

Please note: All power packages must ship LTL.



Newcastle Systems' line of accessories can be integrated with any product series in seconds to create a highly functional mobile workstation that is customized to your specific application.

Accessories include:



Laptop/tablet holder for NB, PC & RC Series



Adjustable keyboard tray for NB & RC Series



Slide-out shelf for NB & RC Series



Add-on push handles for NB Series



Binder holder for NB & PC Series



LCD support for NB & PC Series

“Once implemented, the cost savings of the NB Series Workstations were immediately apparent.”

Paul Camping, Inventory & Receiving Manager
for Care-A-Lot Pet Supply



Drawer (3" / 76 mm) for NB, PC & RC Series



CPU holder for NB & PC Series



Laptop security bracket for NB & RC Series



Scanner holder for NB, PC & RC Series

© Newcastle Systems, Inc. / USA Rev. 18
Content is subject to change without notification