

RouteFinder™ VPN

SOHO Internet Security Appliance



Benefits

- Up to 10 IPSec VPN tunnels
- Strong 3DES and AES encryption
- Serial port for automatic dial-backup
- Secure Internet firewall services

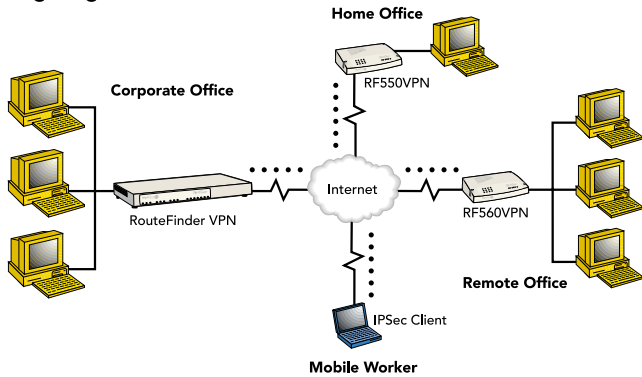
The SOHO RouteFinder VPN gateway is ideal for the small branch office or telecommuter who needs secure access to the corporate LAN. In addition to providing a WAN Ethernet port for DSL or cable broadband Internet access, it also offers both client-to-LAN and LAN-to-LAN VPN connectivity based on the IPSec or PPTP protocols. The SOHO RouteFinder provides 168-bit 3DES and AES encryption to ensure that your information remains private. In addition, it offers secure Internet firewall services.

*Secure VPN Gateway
for Small Branch
Offices or
Telecommuters*

Features

- One WAN Ethernet port connects to a DSL or cable modem
- Supports IPSec VPN tunnels and/or PPTP tunnels (RF560VPN only) for secure LAN-to-LAN and client-to-LAN access over the Internet
- 3DES and AES encryption
- Serial port for automatic dial-backup if your broadband connection goes down
- Built-in 4-port 10/100M bps switch
- Built-in firewall and DHCP services with Network Address Translation (NAT)
- Built-in Stateful Packet Inspection firewall (RF560VPN)
- Built-in dynamic DNS client
- Supports VPN tunneling using FQDN
- Protects your LAN against Denial of Service (DoS) attacks
- Network monitoring via Syslog allows network administrator to view all incoming and outgoing packets, status of connections and specific connection events
- Configuration and management using any web browser
- PPPoE support
- Flash memory for easy updates
- IP address mapping/port forwarding
- Two-year warranty

Highlights



Secure VPN Connections. The SOHO RouteFinder VPN uses the IPSec or PPTP industry standard protocol, data encryption, and the Internet to provide high-performance, secure VPN connections. For LAN-to-LAN connectivity, the RouteFinder utilizes the IPSec protocol to provide up to 10 tunnels with strong 3DES or AES encryption using IKE and PSK key management. For client-to-LAN connectivity, Multi-Tech provides optional IPSec client software allowing road warriors secure access to the company's internal network.

The SOHO RouteFinder RF560VPN also supports remote users that want to use the PPTP VPN client built into the Windows operating system. This provides 40-bit or 128-bit encryption, user name and password authentication.

Connect up to 253 Users to the Internet with Broadband Speed. With the SOHO RouteFinder VPN, up to 253 users are connected to the Internet with only one IP account. The WAN Ethernet port supports DSL or cable speeds of up to 6M bps.

Built-in 10/100 Switch. The integrated 4-port 10/100M bps switch eliminates the need for an additional hub or switch to connect users not on a LAN. It ensures high-speed transmission and can serve as a completely dedicated full duplex backbone.

Network Security. The SOHO RouteFinder VPN uses the NAT protocol to hide internal, non-routable IP addresses and allows internal hosts with unregistered IP addresses to function as Internet-reachable servers. The SOHO RouteFinder RF560VPN provides network layer security utilizing Stateful Packet Inspection, the sophisticated firewall technology found in large enterprise firewalls, to protect the network against intruders and Denial of Service (DoS) attacks.

Automatic Dial Backup. The SOHO RouteFinder also provides an additional serial port that, when connected to a dial-up modem or ISDN terminal adaptor, can serve as a backup resource for Internet access if your cable or DSL service goes down. It can also serve as the primary connection if you do not have broadband connectivity yet in your area.

Virtual Server Support. In addition to providing shared Internet access, the SOHO RouteFinder VPN can support a web, ftp or other Internet servers. Once configured, the SOHO RouteFinder VPN only accepts unsolicited IP packets addressed to the web, ftp or other specified servers.

Dynamic DNS Client. The SOHO RouteFinder has a built in Dynamic DNS client that is compatible with DynDNS.org. The SOHO RouteFinder automatically sends an update to the DynDNS.org update server if the WAN IP address changes. A registered Dynamic DNS account allows you to host your own web site, mail server, or other services on the Internet without having to obtain a static IP address or keep track of a dynamic IP address. It also aids in creating static-to-dynamic or dynamic-to-dynamic IPSec VPN tunnels. In addition, with a Dynamic DNS account you can establish a PPTP VPN tunnel behind the RF560VPN by configuring your PPTP client to connect to yourhostname.dydns.org instead of a dynamic IP address.

Fully Qualified Domain Name (FQDN) Feature. The SOHO RouteFinder's FQDN feature allows you to utilize a static name in the IPSec VPN setup, like "branchoffice.dydns.org", instead of a dynamic IP address, to create static-to-dynamic or dynamic-to-dynamic VPN IPSec tunnels. This allows all of the IPSec VPN connections to act like static-to-static connections. The SOHO RouteFinder checks the FQDN IPSec configuration every two minutes for IP address changes. If the IP address is different than the last time it checked, it drops the current tunnel and creates a new one. This helps to keep IPSec VPN tunnels readily available with minimal interruptions in data communication.

Comprehensive Service and Support. The Multi-Tech commitment to service means we provide a two-year product warranty and service that includes telephone technical support, 24-hour web site and ftp support.

Features	RF560VPN	RF550VPN
Appliance		
Ethernet Ports	4 x 10/100BaseT (LAN) 1 x 10/100BaseT (WAN)	4 x 10/100BaseT (LAN) 1 x 10BaseT (WAN)
Number of Network Users	Unlimited	Unlimited
VPN Features		
Remote User (Client-to-LAN)	Yes - IPSec and PPTP	Yes - IPSec
Branch Office (LAN-to-LAN)	Yes - IPSec	Yes - IPSec
DES and 3DES Encryption (56/168-bit)	Yes	Yes
AES Encryption	Yes	Yes
Encryption Throughput	2M bps	700K bps
IKE	Yes	Yes
VPN Using FQDN	Yes	Yes
Recommended VPN Tunnels (Total)	Up to 10	Up to 5
Firewall Features		
Stateful Packet Inspection	Yes	No
Network Address Translation (NAT)	Yes	Yes
Filtering (Port Number and IP Address)	Yes	Yes
Virtual Server	Yes	Yes
Denial of Service Protection (DoS)	Yes	Yes
Firewall Throughput	10M bps	6M bps
H.323 Pass Through	Yes	Yes
Management Features		
Web Based (HTTP)	Yes	Yes
E-Mail Alerts	Yes	Yes
Local and Remote Management	Yes	Yes
Syslog	Yes	Yes
Intrusion Logging	Yes	Yes
Other Features		
Shared Internet Access Recommended Number of Users	Up to 25	Up to 10
Automatic Dial-backup (Serial Port)	Yes	Yes
PPPoE	Yes	Yes
DHCP Client/Server	Yes	Yes
Built-in Dynamic DNS Client	Yes	Yes
Multiple Public IP's on WAN	Yes	Yes
Warranty	2-years	2-years
Specifications		
Power	12 VDC 1.2A	5 VDC 2A
Physical Description	7.1" w x 4.9" h x 1.4" d; 13 oz. (18.1 cm x 12.5 cm x 3.5 cm; 380g)	7.1" w x 4.9" h x 1.4" d; 13 oz. (18.1 cm x 12.5 cm x 3.5 cm; 380g)
Operating Environment		
Temperature Range	32° - 120° F (0° - 50° C)	32° - 120° F (0° - 50° C)
Humidity	25-85% noncondensing	25-85% noncondensing
Approvals	FCC Part 15 (Class B), CE Mark, UL60950	FCC Part 15 (Class B), CE Mark, UL60950

Ordering Information

Product	Description	Region	VPN Client Software	Description	Region
RF550VPN*	SOHO Internet Security Appliance	Global	RFIPSC-1	IPSec VPN Client-1 User	Global
RF560VPN*	SOHO Internet Security Appliance	Global	RFIPSC-5	IPSec VPN Client-5 User	Global
			RFIPSC-10	IPSec VPN Client-10 User	Global
			RFIPSC-50	IPSec VPN Client-50 User	Global

* Specify country when ordering.

Made in Mounds View, MN, U.S.A.

Trademarks: RouteFinder VPN, Multi-Tech, and the Multi-Tech logo: Multi-Tech Systems, Inc. / All other products or technologies are the trademarks or registered trademarks of their respective holders.

World Headquarters
Tel: (763) 785-3500
(800) 328-9717

www.multitech.com

Multi-Tech Systems (France)
Tel: +(33) 1 64 61 09 81

Multi-Tech Systems (UK)
Tel: +(44) 118-959 7774

