

# MultiModem® II

## Mission-Critical V.92 Corporate Modem



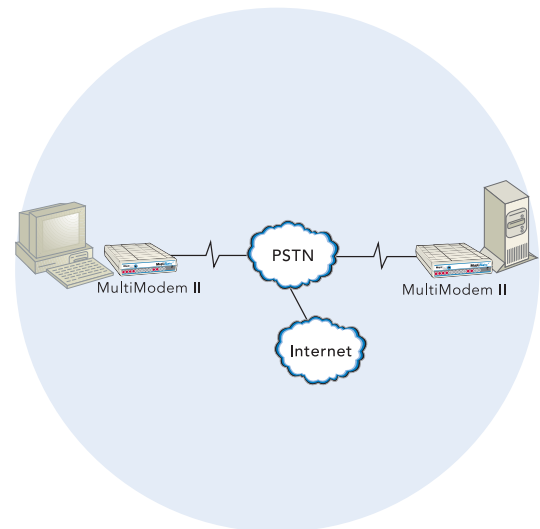
### Benefits

- Synchronous or asynchronous support
- Dial-up or leased line operation
- LCD panel for configuration and diagnostics
- Global approvals

The MultiModem® II corporate modem provides V.92/56K data and 14.4K bps fax communications, a robust smart feature set and an industrial chassis for rock-solid reliability. It is the ideal choice for the corporate market running mission-critical applications. In addition, it is approved for use in many countries around the world. This means one model can ship virtually anywhere.

### Features

- V.92/56K download speeds and 48K upload speeds when connecting with V.92 servers
- Class 1 and Class 2 faxing at 14.4K
- V.44 compression improves data throughput rates
- LCD panel for easy configuration and diagnostics
- Synchronous and asynchronous support
- Dial-up and 2-wire leased line support
- 4-wire leased line support and dial backup
- Remote configuration for centralized setup and management
- Pass-through and fixed callback security
- Global approvals in many countries for worldwide use
- U.S. Caller ID reporting
- Four phone number storage for automatic or DTR dialing
- Flash memory for easy updates
- Five-year warranty



## Highlights

**Easy Control.** The V.92 MultiModem II modem offers quick and easy access to modem information. The front LCD panel provides status, configuration, and diagnostics. In addition, the V.92 model installs with fewer steps because its smarter preconfigured settings default to the most popular options users typically select.

**Increased Upload Speeds.** With the V.92 MultiModem II modem, you can achieve an upload speed of 48K bps (30% increase over V.90 modems). This higher upstream speed reduces data transfer time for large e-mails with attachments and for ftp site uploads, as well as improves operation for interactive applications.

**V.44 Compression.** V.44 is a new data compression standard that will improve the current V.42bis data compression anywhere from 20 to 60 percent, up to as much as 200 percent for certain types of highly compressible data. V.44 enables data throughput rates of higher than 300K bps - much faster than today's typical rates of 150 - 200K bps.

**Backup Service.** When your applications demand uninterrupted service, put a MultiModem II modem at each end for leased line operation with dial backup support. Connect each modem to a dial-up line and rest easy. If the primary modem connection goes down, the backup dial-up line can take over.

**Callback Security.** The MultiModem II modem provides password protection and helps reduce long distance charges for remote offices and users requiring access to the central site LAN. It supports 30 "fixed" accounts. With "fixed" callback security, the modem stores a password and the remote office's phone number. Once the remote site enters their password, the central site's modem calls back using the number stored in its database.

**Remote Configuration.** Whether you provide connectivity for a sales office 2,000 miles away or worldwide e-business services to your clients, the MultiModem II modem lets you take care of configuration from a central site.

**Global Approvals.** With Multi-Tech's global modem solutions, you need just one modem for worldwide use. This model has approvals in many countries so you can ship one SKU (stocking unit) virtually anywhere in the world. Localization kits are available for country-specific power cords, phone cords and telco adapters. Go to [www.multitech.com/globalmodem](http://www.multitech.com/globalmodem) for details.

**Comprehensive Service and Support.** The Multi-Tech commitment to service means we provide a five-year product warranty and service that includes technical support, 24-hour web site and ftp support.

## Specifications

### Rates

Data: V.92/56K downloads & 48K upload speeds from V.92 servers; V.90/56K downloads from V.90 servers; 33.6K bps transfers with other servers

Fax: 14.4K & below

### Standards

Data: V.92, V.90 & enhanced V.34

Error Correction: V.42

Fax: V.17, Group 3; Class 1 & Class 2

Data Compression: V.44, V.42bis, MNP® Class 5

### Connectors

1 DB-25F (RS-232C/D); 3 RJ-11s

### Power

100-240v AC, 50/60 Hz

### Physical Description

6.2" w × 1.4" h × 9.0" d; 2 lbs.

(15.8 cm × 3.6 cm × 22.9 cm; 0.9 kg)

### Operating Environment

Temperature Range: +32° to +120° F (0° to +50° C)

Humidity Range: 25-85% noncondensing

### Certifications

CE Mark

EMC: FCC Part 15 Class B, EN 55024

Safety: cUL, EN 60950, UL 60950

Telecom: CS03, FCC Part 68, TBR21

## Ordering Information

Product	Description	Region
MT5600BA-V92	V.92 Data/Fax World Modem (includes U.S. power cord and RJ11 phone cable)	Global
MT5600BA-V92-EU	V.92 Data/Fax World Modem (includes Euro power cord and RJ11 phone cable)	Global

Made in Mounds View, MN, U.S.A.

**Trademarks / Registered Trademarks:** MultiModem, Multi-Tech, and the Multi-Tech logo: Multi-Tech Systems, Inc. / All other products and technologies are the trademarks or registered trademarks of their respective holders.

**World Headquarters**  
Tel: (763) 785-3500  
(800) 328-9717  
[www.multitech.com](http://www.multitech.com)

**EMEA Headquarters**  
Multi-Tech Systems (EMEA)  
United Kingdom  
Tel: +(44) 118-959 7774

Multi-Tech Systems (EMEA)  
France  
Tel: +(33) 1 64 61 09 81