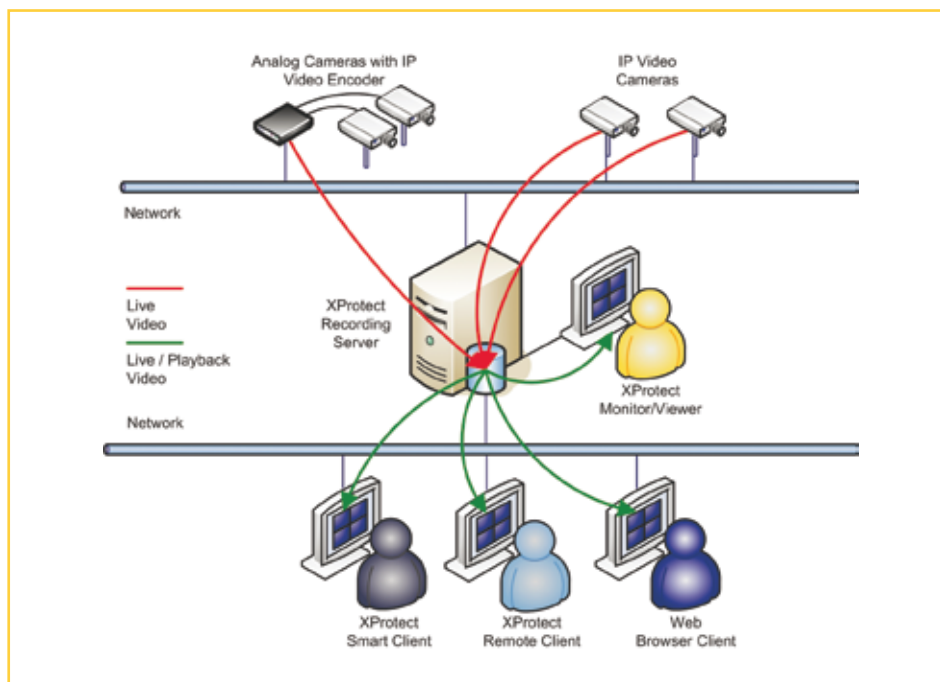




Milestone XProtect™ Basis+

Top performance IP video surveillance with an expanded feature set.

XProtect Basis+ is the right product for small installations that need robust single-server surveillance software with expanded functionality. XProtect Basis+ supports up to 25 cameras simultaneously with the widest choice of network video and computer hardware equipment.



KEY BENEFITS:

- ◆ **Freedom to choose:** Compatible with more than 290 different IP-based video camera and encoder products (MJPEG and MPEG4) from over 32 different vendors.
- ◆ **Dependable, robust and stable:** Proven in daily operation in more than 25,000 customer installations worldwide.
- ◆ **High performance:** Achieved on standard computer equipment by utilizing powerful multi-threaded technology.
- ◆ **Feature-rich remote access:** Reach your video surveillance data from any location at any time using a desktop computer or laptop.
- ◆ **Export evidence material fast:** Deliver authentic video proof to public authorities or for internal investigations.
- ◆ **Future-safe:** The IP approach is the foundation of tomorrow – available today. Ongoing product enhancements give you long-term returns on your surveillance investment.



Key Product Features

Advanced video management tools

SYSTEM, ADMINISTRATION & INTEGRATION

- ◆ **Single-server video surveillance solution:** Unlimited recording of MJPEG and MPEG-4 video from Internet Protocol (IP) cameras and IP video encoders with analog cameras.
- ◆ **Automatic camera model detection:** Supports more than 290 IP cameras and IP video encoder models from over 32 different vendors.
- ◆ **Single-server:** Supporting up to 25 cameras including continuously recording activated by motion or event with speed up functionality.
- ◆ **Scheduled archiving:** Move video data once a day to a local drive.
- ◆ **Built-in Video Motion Detection:** Independent of camera model and supporting up to 25 cameras simultaneously.

REMOTE OPERATIONS

- ◆ **Live view and playback:** From one remote web-based, remote installed or local client at a time supporting up to 25 cameras.
- ◆ **Advanced views layout:** Work with private and shared server-stored camera views containing up to 8x8 layouts, Hotspot and Carousel elements, static and active HTML maps.
- ◆ **Intelligent PTZ:** Manual control, presets and joystick control.
- ◆ **Input/Output Event Control:** Via cameras or networked I/O devices for event control, manual event buttons and event list in recordings.
- ◆ **Single-channel audio:** Listen-in and recording with instant playback.

SEARCH, EXPORT & SECURE DATA

- ◆ **Post recording processing:** Digital Pan/Tilt/Zoom (PTZ) with optional image smoothing, or IPIX post-recording PTZ.
- ◆ **Evidence export:** JPEG, AVI and WAV formats.
- ◆ **Authentication:** Local Microsoft® Windows® User Account and Groups, and XProtect user names and passwords.
- ◆ **Authorization:** Local Microsoft Windows User Accounts and Groups, and XProtect user profiles, all controlling access privileges and allowed actions at camera level.
- ◆ **Logging:** Stores user actions by time, locations and cameras, and full system operation.
- ◆ **Alerting:** Notify users on event or motion detection by sound and e-mail.

"Value Place can record all transactions and also use it for training to assist the front-office people with any questions they may have. The corporate office can log on remotely if there are incidents or events to check, make sure the standard processes are following the corporate quality requirements, and if any modifications are necessary."

– Steve Johnson, Account Manager at ISG Technology Inc.



Detailed Product Features

XProtect Basis+ Server modules

RECORDING SERVER

- ◆ Simultaneous digital multi-channel video and single-channel audio recording.
- ◆ Connectivity to cameras and video encoders supports both MJPEG and MPEG4.
- ◆ Auto-detect camera models during setup.
- ◆ Up to 25 installed cameras with simultaneous recording and live view.
- ◆ Recording technology: secure high speed database holding JPEG images or MPEG4 streams including audio.
- ◆ Recording speed: 30+ frames per second per camera, limited only by hardware.
- ◆ Recording quality depends entirely on camera and video server capabilities.
- ◆ Start cameras on live view requests from clients.
- ◆ Unlimited recording capacity with daily archiving possible.
- ◆ Built-in, real time, camera independent motion detection (VMD); fully adjustable sensitivity, zone exclusions, recording activation with frame rate speed up, and alert activation through email.
- ◆ PTZ preset positions, up to 25 per camera.
- ◆ 'On-the-fly' configuration changes per server while recording is in operation.
- ◆ Flexible online, sound and e-mail notification triggered by event and controlled by time schedule.
- ◆ Run the Recording Server as a Windows Service or as an integrated part of the Live View Monitor application described as follows.

LIVE VIEW MONITOR

- ◆ The Live View Monitor includes all the features of the Recording Server plus more:
- ◆ Local live video viewing.
- ◆ Single-channel audio listen-in with mute function.
- ◆ Dual or triple computer monitor viewing with Hotspot window and Carousel display.
- ◆ View up to 25 cameras simultaneously with optional update on motion only.
- ◆ Viewing speed: 30+ frames per second per camera, limited only by hardware.
- ◆ Quick Browse function to playback latest recorded video.
- ◆ Start and stop one or all cameras manually.
- ◆ Activate up to 8 pre-defined event buttons per camera, globally (all cameras) or camera-specific.
- ◆ Activate output signals on camera or dedicated devices.
- ◆ Option to hide Administrator button from other users.
- ◆ Take manual control over a PTZ camera.
- ◆ Joystick functionality for supported cameras.
- ◆ IPIX technology for PTZ in 360° recorded images.

Detailed Product Features

XProtect Basis+ server modules

RECORDING VIEWER

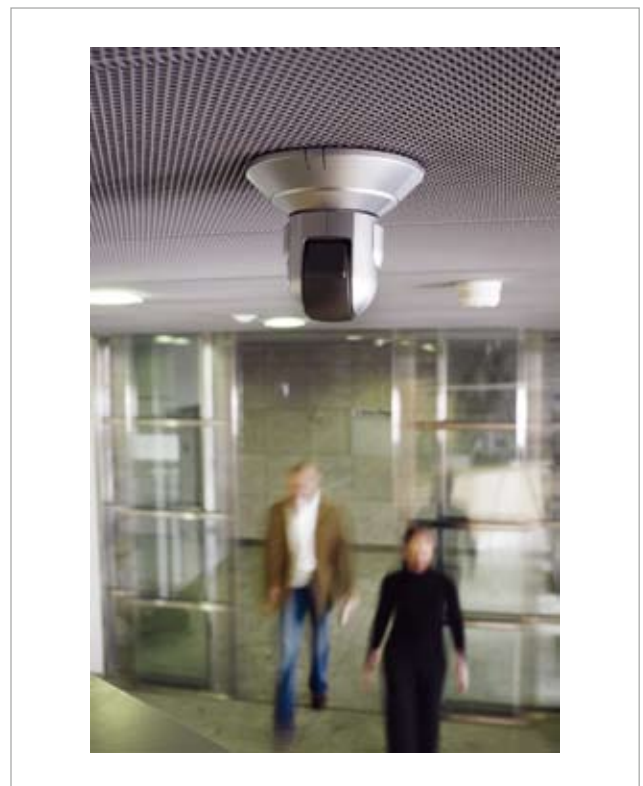
- ◆ Playback recorded video and audio locally on the Recording Server.
- ◆ View up to 16 cameras time-synched during playback.
- ◆ Scrollable activity timeline with magnifying feature.
- ◆ Instant search on recordings based on date/time and activity/ alarm (Video Motion Detection).
- ◆ Evidence can be generated as a printed report with time and date stamp, as a JPEG image, or in AVI film.
- ◆ Export audio recordings in WAV or AVI format.
- ◆ Export video digitally zoomed to view area of interest only and to minimize export footprint size.
- ◆ Option to send email.
- ◆ De-interlacing of video from analog cameras.
- ◆ IPIX technology for PTZ in 360° recorded images.

IMAGE SERVER

- ◆ Remote access for Smart and Remote Clients.
- ◆ Built-in web server for download and launch of clients and plug-ins.
- ◆ Authenticate access based on local Microsoft Windows account database, or XProtect user name and password.
- ◆ Authorize access privileges per local Microsoft Windows user accounts and groups, XProtect user profile or grant full access.
- ◆ User profiles control access to: Live view, PTZ, PTZ presets, output control, events and audio; Playback, AVI export, JPG export, Sequences and Audio.
- ◆ Setup, Edit private views, Edit public views.
- ◆ Audit logs of exported evidence by user and file.
- ◆ Audit logs of client user activity by time, locations and cameras.

HTTP SERVER / REAL-TIME FEED SERVER

- ◆ Remote access for web browser without installing any client software.
- ◆ View live video or playback 1-4 cameras' recordings.
- ◆ Export video as AVI files.
- ◆ Authenticate access based on user name and password.
- ◆ Authorize access either as 'Anonymous', 'Predefined user only' with full access to all cameras, or 'Restrict user access by camera'.
- ◆ Restrict access to playback and AVI export.
- ◆ Audit logs of client user activity by time and cameras.

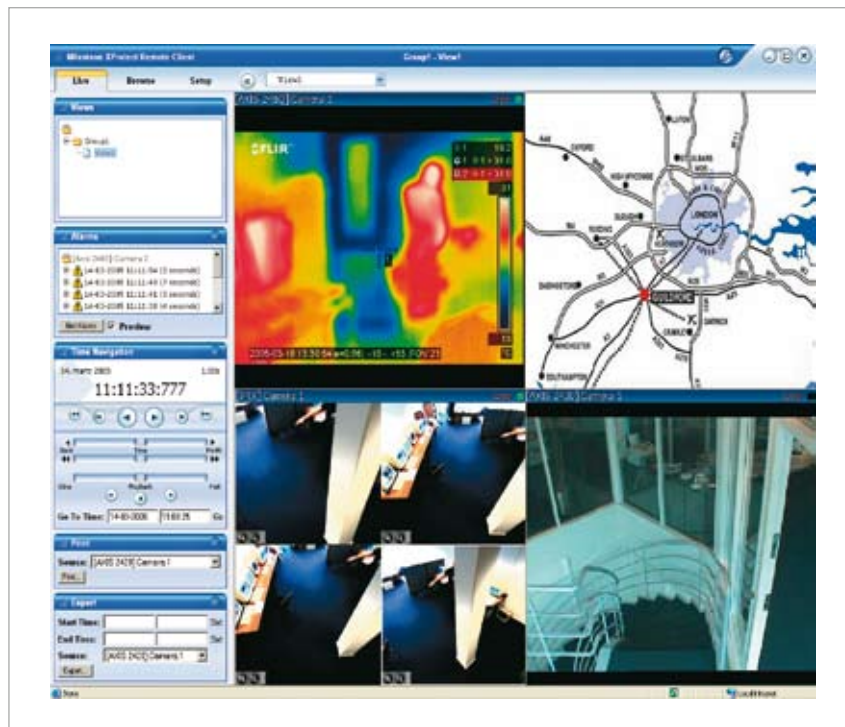


Detailed Product Features

XProtect Basis+ client modules

REMOTE CLIENT

- ◆ View live video or playback 1-16 cameras' recordings from the server simultaneously.
- ◆ Advanced video navigation including fast/slow playback, jump to date/time, single step and video motion search.
- ◆ Individual views can be user-defined in various layouts: view or playback camera images simultaneously in the same view.
- ◆ Access to shared views can be controlled centrally via the server.
- ◆ Import static or active HTML maps for fast navigation to cameras and good premise overviews.
- ◆ Control output port relay operation, like control of gates.
- ◆ Quick overview of sequences with detected motion and preview window.
- ◆ Quick overview of events/alerts.
- ◆ Control PTZ cameras remotely, also using preset positions.
- ◆ Remote PTZ Point-and-Click control.
- ◆ Remote PTZ zoom to a marked rectangle.
- ◆ IPIX 1x2 or 2x2 'Quad View' for viewing all 360° at once.
- ◆ Optional video compression in streaming from server to client gives better use of bandwidth.
- ◆ Create AVI files or save JPEG images.
- ◆ Print incident reports with free-text user comments.
- ◆ System logon using XProtect user name and password.



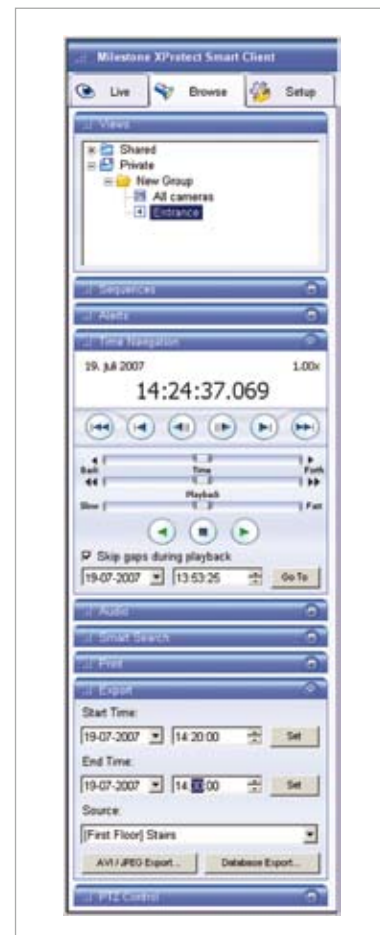
With XProtect Remote Client you can import static or active HTML maps for good premise overviews and quick navigation to cameras in multiple locations.

Detailed Product Features

XProtect Basis+ client modules

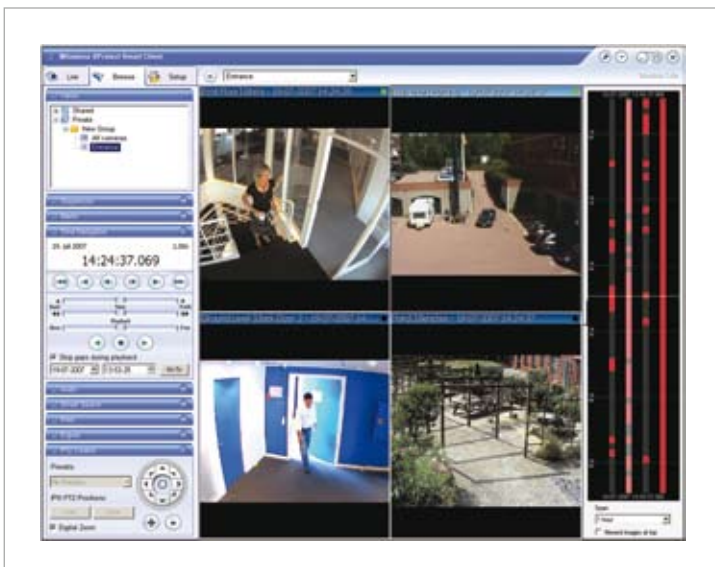
SMART CLIENT

- ◆ Smart Client includes all the features of XProtect Remote Client plus more:
- ◆ Live view digital zoom allows zoomed-out recordings while the operator digitally can zoom in to see details.
- ◆ 'Update On Motion Only' optimizes CPU usage by letting motion detection control whether the image should be decoded and displayed or not. The visual effect is a still image in the view until motion is detected.
- ◆ Shared and private camera views offer 1x1 up to 8x8 layouts in addition to asymmetric views.
- ◆ Hotspot function for working in details with a camera selected from a view containing multiple cameras.
- ◆ Carousel function allows a specified view to rotate between pre-defined cameras not necessarily present in the view at the same time.
- ◆ Cameras' built-in audio sources available live and in playback.
- ◆ Goto PTZ preset positions directly from camera menu.
- ◆ Goto a specific camera directly from camera menu.
- ◆ Copy camera images to clipboard.



The browsing functionality enables the operator to quickly find specific recordings. Events triggered from motion and alarms are conveniently displayed and can be browsed through in seconds.

The advanced Smart Client provides full control and overview of the entire installation, with the option to view all cameras at the same time. The interface is easy to use and it runs on standard PC hardware.



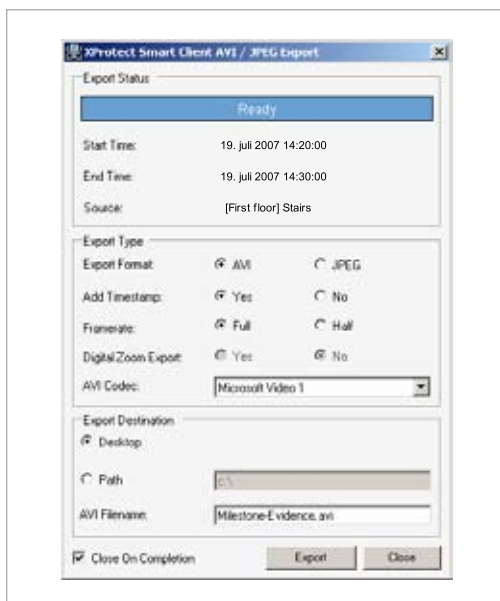
Detailed Product Features

XProtect Basis+ client modules

- ◆ Manually trigger events by activating an administrator defined event from a list.
- ◆ Audible alerts activated by motion detection or event occurrence per camera.
- ◆ Graphical timeline displays scrollable view of recorded sequences by adjustable time spans for an excellent graphical overview of when images have been recorded.
- ◆ Digital zoom function is also available in playback mode.
- ◆ Image printing features.
- ◆ Assign keyboard shortcuts to common actions.
- ◆ Assign common actions to joystick buttons.
- ◆ System logon using Windows NT LAN Manager (NTLM) challenge handshake with local Microsoft Windows user account database.

INTEGRATION OPTIONS

- ◆ Compatible with XProtect Transact that integrates video surveillance with ATM or POS cash register systems for managing loss prevention and fraud.
- ◆ Integrate with access control systems, alarms, gates, building management systems, etc. using hardware I/O and internal events.
- ◆ Create, import and use HTML pages for navigation between views in XProtect Smart and Remote Clients.



Evidence material is quickly created with the Smart Client. Video recordings can be exported to either JPEG or AVI format. These recordings are easily viewed on virtually any standard PC. Choose between several AVI codecs to ensure maximum compatibility.

Milestone Systems

The Open Platform IP Video Software

MINIMUM SYSTEM REQUIREMENTS:

XProtect Basis+ Server 6.0:

CPU: Intel® Pentium® 4 or higher (Intel® Xeon® recommended), minimum 2.4 GHz
 RAM: Minimum 1GB (2 GB or more recommended)
 Network: Ethernet (1 Gbit recommended)
 Graphics Card: AGP or PCI-Express, minimum 1024 x 768, 16 bit colors
 Hard disk type: E-IDE, PATA, SATA, SCSI, SAS (7200 RPM or faster)
 Hard disk space: Minimum 80 Gbyte free (depends on number of cameras and recording settings)
 OS: Microsoft® Windows® 2000 Professional, Windows 2000 Server and Advanced Server, Windows XP Professional (32 and 64 bit) and Windows Server 2003 (32 and 64 bit), Windows Vista® Business (32 bit), Windows Vista Enterprise (32 bit) and Windows Vista Ultimate (32 bit)
 Software: DirectX 9.0 or newer required to run Live View Monitor application

XProtect Smart Client 3.0:

CPU: Intel Pentium 4 or higher (Intel Xeon recommended for large views), minimum 2.4 GHz
 RAM: Minimum 512 Mbyte (1 GB recommended for larger views)
 Network: Ethernet (100 Mbit or higher recommended)
 Graphics Card: AGP or PCI-Express, minimum 1024 x 768 (1280 x 1024 recommended), 16 bit colors
 Hard disk space: Minimum 50 Mbyte free
 OS: Microsoft Windows 2000 Professional, Windows 2000 Server and Advanced Server, Windows XP Professional (32 and 64 bit) and Windows Server 2003 (32 and 64 bit), Windows Vista Business (32 bit), Windows Vista Enterprise (32 bit) and Windows Vista Ultimate (32 bit)
 Software: Microsoft .NET 2.0 Framework and DirectX 9.0 or newer

XProtect Remote Client 3.0:

CPU: Intel Pentium 4 or higher, minimum 2.4 GHz
 RAM: Minimum 256 Mbyte (512 MB recommended for larger views)
 Network: Ethernet (100 Mbit or higher recommended)
 Graphics Card: AGP or PCI-Express, minimum 1024 x 768 (1280 x 1024 recommended), 16 bit colors
 Hard disk space: Minimum 10 Mbyte free
 OS: Microsoft Windows 2000 Professional, Windows 2000 Server and Advanced Server, Windows XP Professional (32 and 64 bit) and Windows Server 2003 (32 and 64 bit), Windows Vista Business (32 bit), Windows Vista Enterprise (32 bit) and Windows Vista Ultimate (32 bit)

COMPANY PROFILE:

Milestone is the world market leader for open platform IP video management software. The XProtect products are easy to use, robust and proven in operation at 25,000 customer installations. Supporting the widest choice in network hardware and integration with other systems provides best-of-breed solutions to video enable your business, reduce costs, optimize processes, protect assets and ultimately increase value in your company's products and services. Milestone solutions are sold through authorized partners in more than 60 countries.

PRODUCT RANGE:

XProtect Corporate is a premium multi-server video surveillance system with centralized management of unlimited cameras in numerous locations including full-fledged remote access.

XProtect Enterprise is a comprehensive multi-server video management system running unlimited cameras and including full-featured remote access clients.

XProtect Professional is an advanced single server video management system running up to 64 cameras per server including full featured remote access clients.

XProtect Basis+ is an expanded single server video management system running up to 25 cameras per server including full featured remote access client.

XProtect Transact is an add-on product that handles loss prevention through video evidence combined with time-linked Point of Sale (POS) or Automated Teller Machines (ATM) transaction data, integrated with XProtect Corporate, Enterprise, Professional or Basis+.

Company and product names mentioned are registered trademarks of their respective owners. Milestone Systems reserves the right to change the specification without prior notice.