

DENSO

Bar Code Handy Terminal
BHT-200B/BW

Introducing the New Concept BHT with a
QVGA color large screen and Windows® CE. NET



Features

Progressive Advanced Scanning

At a range of up to 700mm the advanced CCD scanning system enables high performance reading capability, even narrow bar labels are quickly read at this distance.

High Durability

- The CCD scan engine has no moving parts ensuring superior durability.
- Shock Resistant to withstand multiple drops from 1.2m onto concrete, and sealed against water and dust to IP54 international standard.

High Speed Processing

With DENSO's specially developed driver, scanned bar code information is quickly processed and shown on the display.

Microsoft Windows® CE.NET

The latest Microsoft embedded Operating System provides an open architecture for application development.

Development Tools

- Microsoft embedded Visual C ++4.0
- Windows CE Version BHT
- Software Developer's Kit (SDK)

* This software can be downloaded from www.denso-wave.com

High-speed IEEE802.11b Wireless Communication

Standard radio frequency technology IEEE 802.11b enables 11Mbps high-speed wireless communication.

Grip model

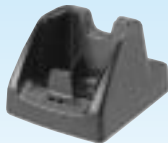
- Designed for various logistic industrial application.
- Additional battery in a grip enables long lasting operation. <Battery Power 1700mAh>

Accessories

- Hand Strap
- Touch Pen

Options (sold separately)

- Optical Communication
Unit CU-201(RS-232C interface)
Unit CU-221(USB1.1 interface)
- Lithium Ion Battery Charger CH-201
- Lithium Ion Battery BT-20L



New Release Soon

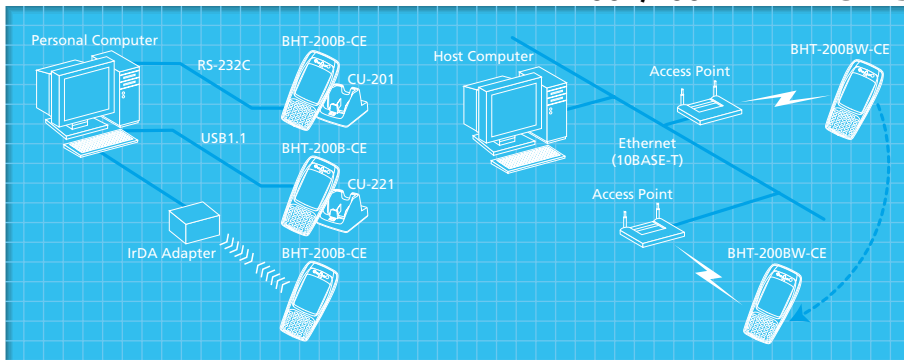
- 2D Imager
- Bluetooth I/F

- Specifications are subject to change without notice.
- Information in this catalog is current as of May 2003
- Microsoft®, Windows®, and the Windows logo are registered trademarks of Microsoft Corporation in the US and other countries.

Manufacturer : DENSO WAVE INCORPORATED
Printed in Japan on 100% -recycled paper

Application Example

BHT-200B/200BWFEATURES



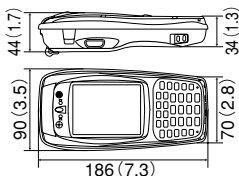
Specifications

		BHT-260B-CE	BHT-260BW-CE	
Controller	CPU	Intel XScale PXA250		
	Memory	RAM:32MB FlashROM:32MB (expandable CF slot)		
Display	Size	240X320 dots (QVGA)		
	Display Device	Liquid crystal dot matrix color display		
	Backlight	YES (LED)		
Scanner	Method	Advanced scanning (CCD)		
	Scanning Area	Max. 700mm *1		
	Scanable Codes	EAN-13/-8, UPC-A/-E, UPC/EAN (with add ON), CODABAR(NW-7), CODE39, CODE93, Interleaved 2 of 5, CODE128 (EAN-128), STF		
	Resolution	0.125mm (PCS≥0.9)		
	Scanning Confirmation	2-color LED (red and blue) buzzer, vibrator		
Keypad	Number of Keys	30 keys (not including power key) plus 2 magic keys		
Communications	Wireless I/F	Certificate	—	IEEE802.11b
		Frequency	—	2.4GHz band
		Range *2	—	Indoor: approx. 75m, Outdoor: approx. 200 m
		Modulation	—	Spectrum diffusion (direct diffusion system)
		Speed *2	—	11/5.5/2/1Mbps (automatic selection)
	Optical I/F	System	Infra-red (IrDA1.2 compliant)	
		Speed	115.2 kbps MAX.	
Range		Approx. 0.2m		
Cable I/F	USB 1.1			
Power Supply	Main Battery	Lithium-ion battery (sold separately)		
Auxiliary Functions	Clock, buzzer, vibrator, remaining battery display			
Weight	Approx. 360g		Approx. 380g	
Environmental Requirements	Operating Temp.	-5°C ~ 50°C		
	Water/Dust proof	IP54		
	Shock Resistance	1.2m (onto concrete) X30 *3		

*1: Narrow bar width over 0.635 mm, peripheral lighting over 500 lux.
*2: Range and speed depend on environmental conditions.
*3: Tested value, not guaranteed.

Dimensions

Unit:mm(inch)



Scan Range

Unit:mm

