



## SCANMATIC

### 2D Barcode Scanner

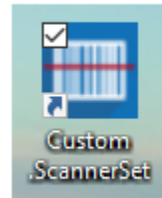
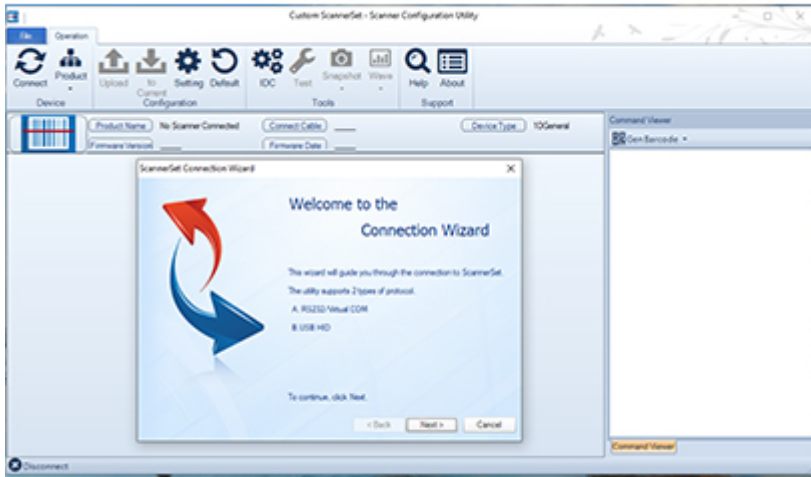
SCANMATIC SM420 is the 2D professional barcode scanners designed to offer the best of the experience to user, in terms of speed, simplicity of use and mistakes absence. SCANMATIC readers have a modern design with a rugged housing, IP42 protection and they guarantee unique performances. Thanks to the optional stand it is possible to use the reader hands-free. In addition to sustain the scanner, the stand permits to activate "intelligent activation" function thanks to which it is possible the barcodes automatic scan, when presented in front of the reader. SCANMATIC guarantees an exceptional operation speed not having to orient the code for reading.



## CHARACTERISTICS

- Easy installation thanks to pre-setting
- Great reading performance on labels and in environments with poor light
- IP42 protection
- Optional stand to ease the hands-free reading
- Automatic detection with the "intelligent activation"

## SOFTWARE:



Custom **ScannerSet**:  
configuration software for  
SCANMATIC range  
scanners (programmable  
through cable)

## What is in the box:

- Device + serial cable, quick guide, power supply 5V, USB cable, USB power cable length 120cm, RJ45/DB9 cable converter length 25cm, Stand

**TECHNICAL SHEET****2D****SM420****Interfaces**

USB/ RS232

**Supported Barcodes****1D:** UPC-A, UPC-E, EAN-8 / JAN-8, EAN-13 / JAN-13, Code 39, Code 128, Interleaved 25, Industrial 25, Matrix 25, Codabar / NW7, Code 93, China Posta, MSI / Plessey, Telepen, GS1 Databar Omni-direzionale, GS1 Databar Limited, GS1 Databar Expanded Opzione: Aztec, Micro PDF 417, Micro QR Code, Han Xin Code, GM Code**2D:** Data Matrix, PDF 417, QR Code

Option: Aztec, Micro PDF 417, Micro QR Code, Han Xin Code, GM Code

**OPTICAL****Optical sensor**

CMOS sensor

**Light**

LED white leg

**Resolution**3 mil / 0.076mm @ PCS90% Code39  
8mil / 0.2mm @ PCS90% QRCode**Scan Speed**

60 fps (at full resolution)

**Sealing**

IP42 water and dust resistance

**Indicator**

-

**Print Contrast**

PCS30% @ 5mil / 0.127mm

**Reading Distance**

250mm @ 20mil / 0.5mm, PCS90%

**OTHER DATA****Power Consumption**

110 mA

**Power Supply**

±9V RS232 +5V USB

**Operating Temperature**

0°C to 50°C (32°F to 122°F)

**Drop Resistance**

180 cm

**Materials**

ABS / Rubber

**Dimensions**

73.50 mm (W) x 173 mm (L) x 76.2 mm (H)

**MTBF**

50.000 hours

**MODELS**



**997ED030000003**

SCANMATIC STAND SYNC + BCR 2D  
SM420 KIT

---

CUSTOM S.P.A. - Via Berettine, 2 - 43010 Fontevivo PR - VAT: IT02498250345 - TEL: +39 0521 680111 - FAX: +39 0521 610701 - UNIQUE CODE:  
T180W10

The technical data on this website are not binding and may be changed without advanced notice.  
Last update: 26 February 2021