

CubiScan[®] 150

Applications/Benefits

Warehousing and Distribution

- Eliminates manual data entry and protects data integrity
- Provides data for storage location selection, carton selection, and shipment planning
- Provides data for use in facility layout, pallet stacking and load optimization software packages
- Interfaces directly to manifesting and warehouse management software systems

Freight Manifesting / Auditing Applications

- Dimensions freight instantly and accurately without damaging the package or its contents
- May be configured for in-line or stand-alone operation
- Gives immediate computation of dimensional-weight for shipping charges
- Facilitates load, weight, and balance planning
- Manifests freight correctly to avoid costly "Charge Backs"

More Highlights

- Interfaces directly to PC or mainframe host devices
- Visual readout instantly displays dimensions, weight, and dimensional-weight
- Can be deployed in mobile (with casters) or stationary configurations
- Outputs in metric and/or imperial units
- Uses sensing technology that is safe for both operator and package contents





CubiScan 150

Specifications

Physical Specifications

Length	64 in (162 cm)
Width	42 in (107 cm)
Height	87 in (221 cm)
Weight	430 lbs (195 kg)

Performance Specifications

	Standard	U.S.A. LFT - NTEP	Canada LFT - MC	Europe LFT - MID/NAWI	Australia LFT - NMI
Length Capacity	48.0 in (120 cm)	min 3.0 in (8 cm) max 48.0 in (120 cm)	min 3.0 in (8 cm) max 48.0 in (120 cm)	min 8 cm max 120 cm	min 8 cm max 120 cm
Width Capacity	39.0 in (100 cm)	min 2.4 in (6 cm) max 39.0 in (100 cm)	min 2.4 in (6 cm) max 39.0 in (100 cm)	min 6 cm max 100 cm	min 6 cm max 100 cm
Height Capacity	40.0 in (100 cm)	min 2.4 in (6 cm) max 40.0 in (100 cm)	min 2.4 in (6 cm) max 40.0 in (100 cm)	min 6 cm max 100 cm	min 6 cm max 100 cm
Measurement Increment	0.1 in (0.2 cm)	0.1 in (0.2 cm)	0.2 in (0.5 cm)	0.5 cm	0.5 cm
Weight Capacity	min 0.05 lb (0.02 kg) max 150 lb (70 kg)	min 0.05 lb (0.02 kg) max 150 lb (70 kg)	min 0.05 lb (0.02 kg) max 150 lb (70 kg)	min 0.5 kg max 60 kg	min 0.02 kg max 70 kg
Weight Increment	0.05 lb (0.02 kg)	0.05 lb (0.02 kg)	0.05 lb (0.02 kg)	0.05 kg	0.02 kg
Operating Temperature	min 14 F (-10 C) max 104 F (+40 C)	min 14 F (-10 C) max 104 F (+40 C)	min -10 C max +40 C	min -10 C max +40 C	min -10 C max +40 C

Other

Measuring Sensor	Ultrasound (50KHz)
Weight Sensor	Resistive load cell
Connectivity	2 - serial ports, EIA RS232-C, bi-directional, 1 - serial printer port, EIA RS232-C, bi-directional with flow control, 1 - Ethernet connection, 10 BaseT, 10 Mbps
User Interface(s)	Integrated display & keypad / QBIT™ Software
Data Output	ASCII
Power Requirements	95 - 240 VAC, 47 - 63 Hz, single phase
Humidity	0 - 90% non-condensing



Safety Compliance:
UL 1950 (USA), CSA 950 (Canada), IEC 950 (International) for ITE

EMI Compliance:
FCC, Industry Canada and CISPR 22 Class A

CubiScan® and the Quantronix logo are registered trademarks of Quantronix, Inc. Scanning New Dimensions™, Qbit™, QbitWIN™, and The FreightWeigh System™ are trademarks of Quantronix, Inc. Windows® is a registered trademark of Microsoft Corporation.

CubiScan software and firmware are protected by international and domestic copyrights.

CubiScan 100 measurement products incorporate technology protected by U.S. Patent No. 5,422,861 and foreign patents.

CubiScan 150 measurement products are protected by one or more of U.S. Patents Re42,430 and D490,328 and foreign patents. Another foreign patent is pending.

CubiScan 110 measurement products are protected by one or more of U.S. Patent Re42,430 and foreign patents. Another foreign patent is pending.

CubiScan 1000-VS measurement products incorporate technology protected by U.S. Patent No. 7,277,187 and foreign patents.

This document Copyright© 2011 by Quantronix, Inc. All rights reserved.

Quantronix proudly introduces the CubiScan® 150 Manifesting Table: a versatile tool for today's dimension and weight-based freight manifesting applications. Designed for use in distribution, direct fulfillment, and logistics environments, the 150 combines the attributes of flexibility, accuracy, and durability into one attractive and functional package.

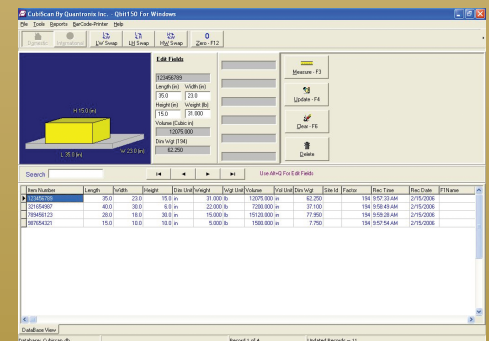
The CubiScan 150 is robust, with a large measurement range and a high weight capacity; yet it is precise.

The CubiScan 150 is mounted on locking casters, so it can be operated in a fixed position or quickly moved and redeployed when necessary.

Each unit has two active serial communication ports, one serial printer port, and an Ethernet port allowing for network connection and data transfer.

With an optional PC-based interface (called Qbit™), the CubiScan 150 is capable of buffering thousands of data records, can interface to bar code scanning equipment, label printing devices, and can communicate directly (in batch or real-time mode) with your manifesting or warehouse management system.

Discover how the CubiScan 150 can help eliminate costly Back-Charges and make a difference in the most important aspect of your business: the bottom line.



380 South 200 West • P.O. Box 929 • Farmington, Utah • 84025 • USA
1-800-488-CUBE • (801) 451-7000 • Fax: (801) 451-0502
e-mail: info@cubiscan.com • www.cubiscan.com